



SourceAnywhere™

Standalone

Dynamsoft SourceAnywhere Standalone

Step by Step Setup Guide

Dynamsoft™

The leading developer of version control and issue tracking software

Contents

❖ Introduction	3
❖ The Guide	3
• Server	3
Installation Process.....	3
Starting the Service	9
• Windows GUI Client	10
Installation Process.....	10
Connect to Server	11
• Visual Studio 6 and 2003 IDE Client	12
• Visual Studio 2005/2008/2010 IDE Client	13
• Server Manager	13
Running the Setup	13
Starting the Server Manager	14

❖ Introduction

This article is a quick step-by-step guide to be used as an aid for new users of SourceAnywhere Standalone. This article will guide you from installation and server configuration to enable you to login the server successfully.

If you are having trouble getting SourceAnywhere Standalone to work properly and would like some assistance, please do not hesitate to contact us by:

Phone: 1-877-605-5491 (toll free) or 604-605-5491

Email: sawstd@dynamsoft.com

LiveHelp: <http://www.dynamsoft.com/support/livehelp.aspx>

For more detailed information on how to configure SourceAnywhere Standalone, we recommend you refer to the Help file that comes with the software.

❖ The Guide

- **Server**

Installation Process

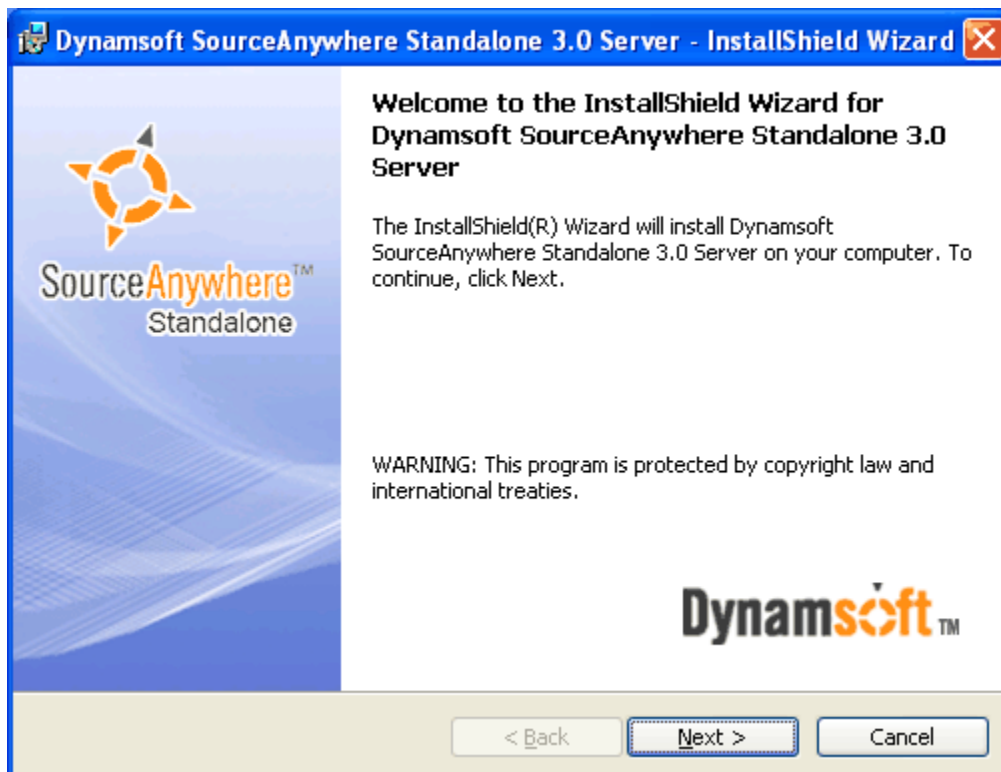
To perform the installation, you must be logged in as the system or machine Administrator and then make sure SQL Server or MSDE is running.

1. Welcome to the Dynamsoft SourceAnywhere Standalone Server Installation Wizard

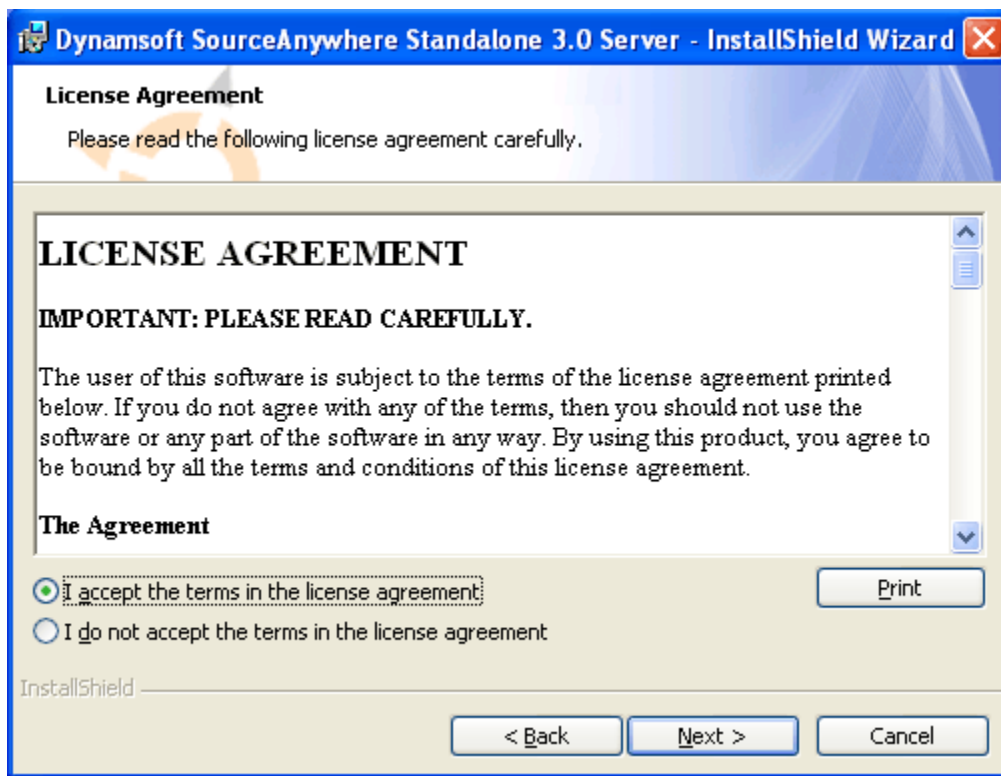
Double click on the installation package to launch Dynamsoft SourceAnywhere Standalone Server Installation Wizard.

2. Software License Agreement

Please read the license agreement carefully, and then select "I accept the terms in the license agreement."



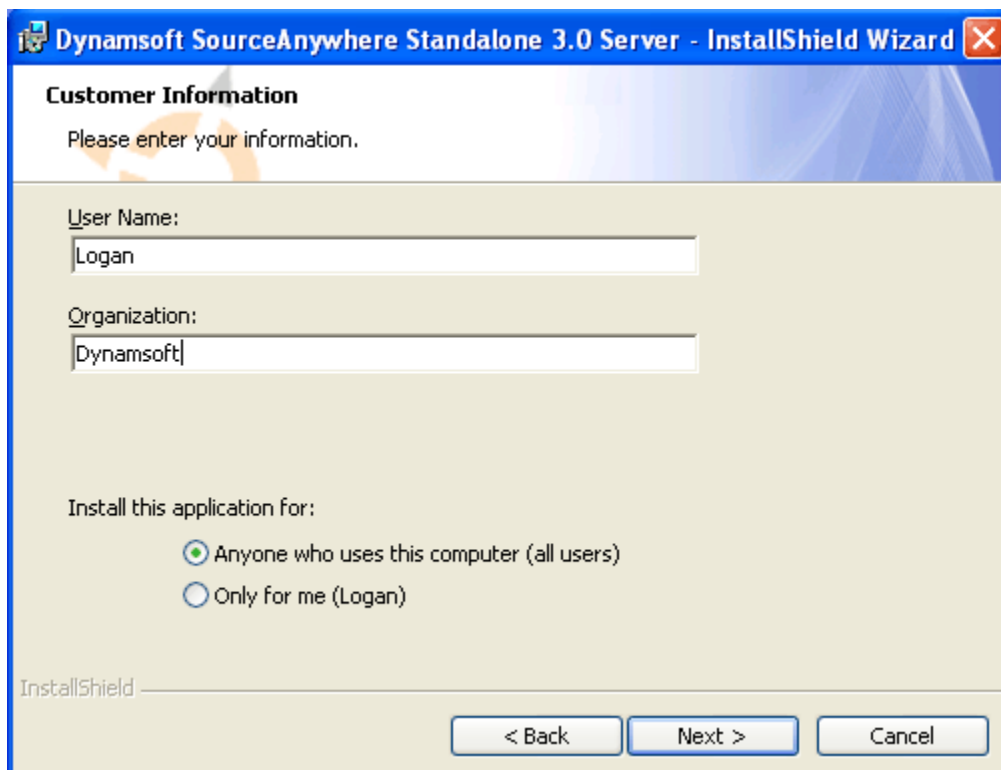
(Step 1)



(Step 2)

3. Customer Information

Enter your information.



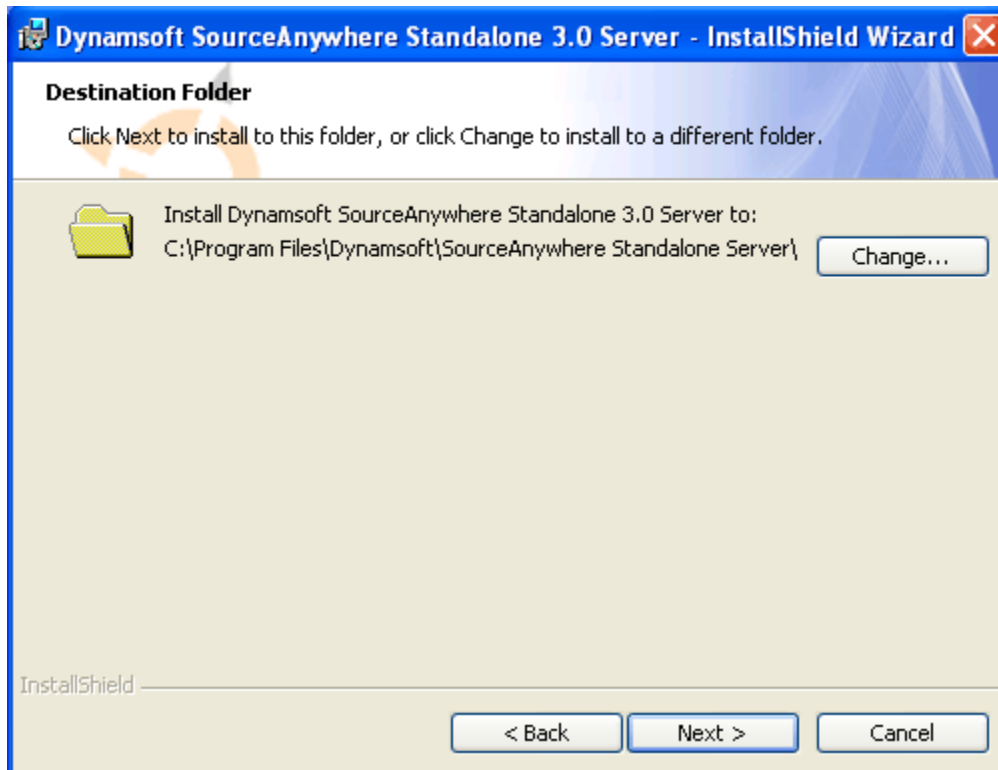
The screenshot shows a Windows-style dialog box titled "Dynamsoft SourceAnywhere Standalone 3.0 Server - InstallShield Wizard". The window has a blue header bar with the title and a close button. Below the header, the text "Customer Information" is displayed in bold, followed by "Please enter your information." in a smaller font. The main area contains two text input fields: "User Name:" with the text "Logan" and "Organization:" with the text "Dynamsoft". Below these fields, there is a section titled "Install this application for:" with two radio button options: "Anyone who uses this computer (all users)" (which is selected) and "Only for me (Logan)". At the bottom of the window, there are three buttons: "< Back", "Next >", and "Cancel". The "InstallShield" logo is visible in the bottom left corner of the main area.

(Step 3)

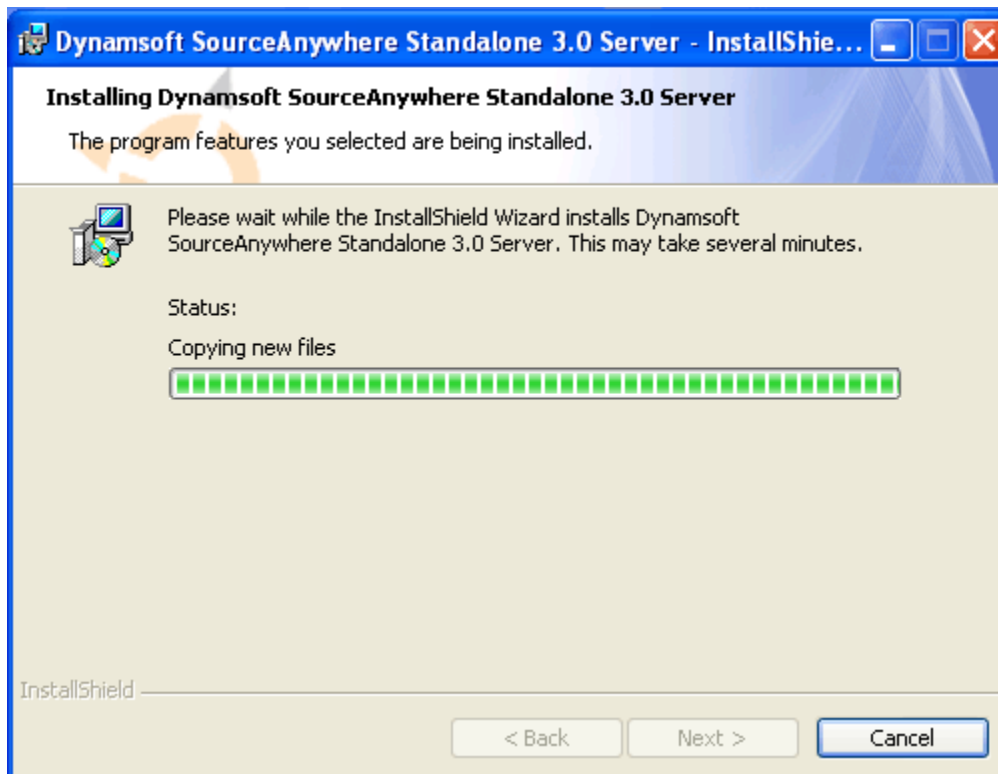
4. Destination Folder

Please select the folder where Dynamsoft SourceAnywhere Standalone Server will be installed. The default destination folder is "C:\Program files\Dynamsoft\SourceAnywhere Standalone Server". If you want to change the destination folder, click Change.

5. Install Dynamsoft SourceAnywhere Standalone Server



(Step 4)



(Step 5)

6. Configure Dynamsoft SourceAnywhere Standalone Server

- Dynamsoft SourceAnywhere Standalone Administration

Dynamsoft SourceAnywhere Standalone Admin Password

Please enter a password to use for the Dynamsoft SourceAnywhere Standalone Admin user below. This password will be required to configure the Dynamsoft SourceAnywhere Standalone Server, add users, add repositories, etc

Admin Password: [.....]

Confirm Password: [.....]

OK Cancel

Create a password for user Admin - the default administrator of Dynamsoft SourceAnywhere Standalone. A blank password is acceptable, but not recommended because of security concerns.

This password will be required for the user Admin to log in Dynamsoft SourceAnywhere Standalone Server.

- SQL Server Setup

Connect to SQL Server

SQL Server: [(local)]

Connect using:

Use Windows authentication

Use SQL Server authentication

Login Name: [sa]

Password: [..]

OK Cancel

Dynamsoft SourceAnywhere Standalone will create a database named with "SourceAnywhere" on SQL Server installed on the local machine or a different machine on the network. You can choose to use Windows Authentication or SQL Server authentication to connect to the SQL Server. If you are not sure which authentication mode your SQL Server is using, please contact your SQL Server administrator.

You can specify the SQL Server used to store Dynamsoft SourceAnywhere Standalone database during the SourceAnywhere Standalone Server installation process.

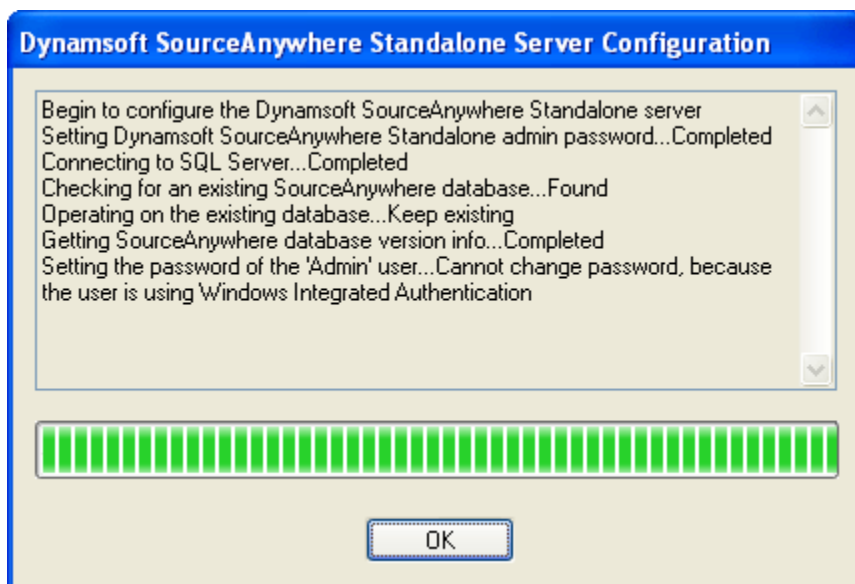
For SQL Server, you can specify the server IP or name in the Server name edit box. For SQL Server Express, you need to use the server name or IP address, plus "\", plus the SQL Server instance name. The default instance name is "SQLEXPRESS". So for SQL Server Express, you have "ServerName\SQLEXPRESS" for the Server name edit box.

If you choose SQL Server authentication mode, you should use the "sa" account or any other accounts that can play System Administrators roles in SQL Server.

After the installation, you can change the general properties of the SQL Server through SourceAnywhere Standalone Service Configurator Server Info -> SQL Connection tab.

7. Configuration Information

Configure Dynamsoft SourceAnywhere Standalone Server. To continue, click OK.



8. Installation Complete

Dynamsoft SourceAnywhere Standalone Server has been successfully installed in your computer. To exit, click Finish.



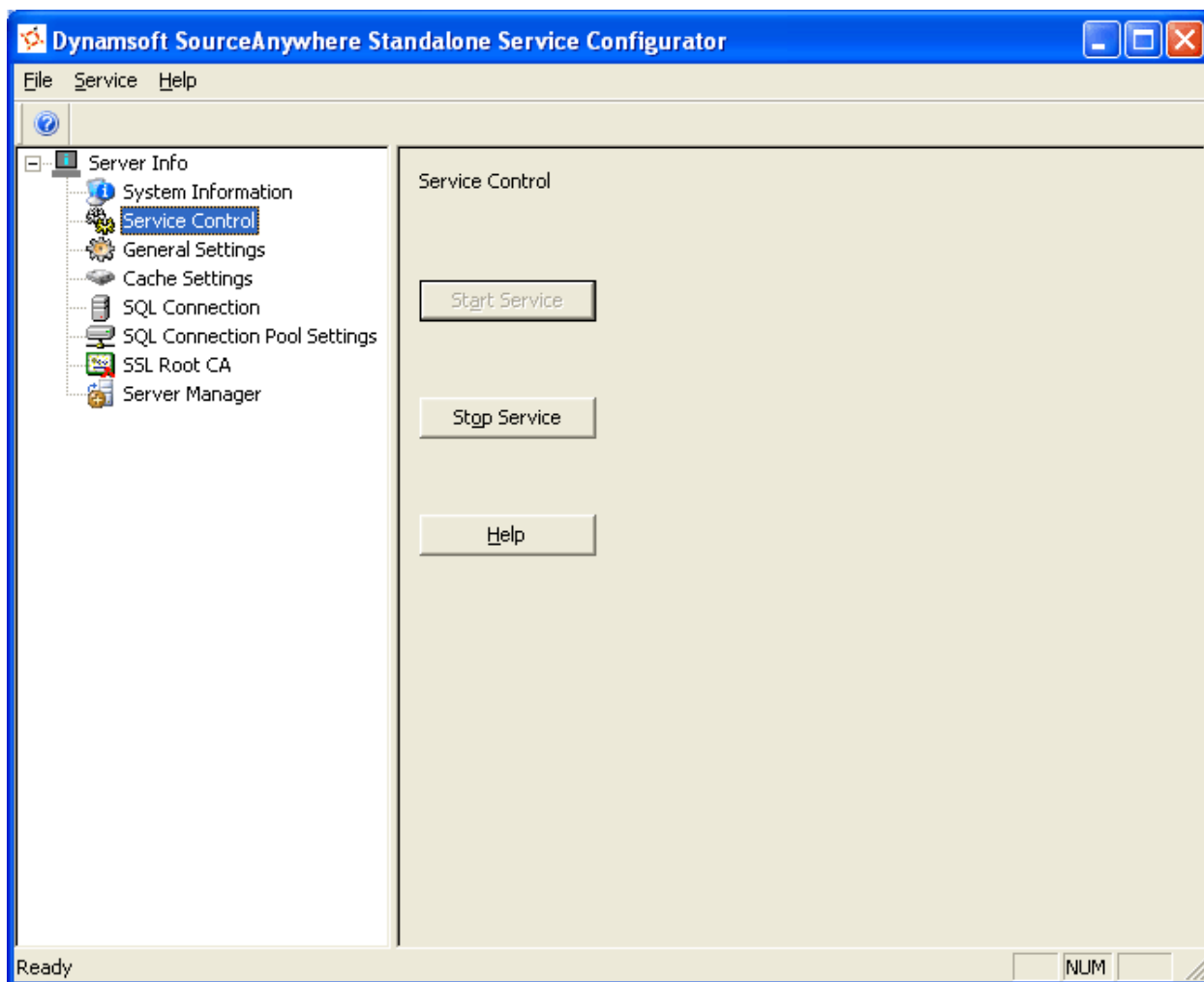
Starting the Service

There are two ways to start the server:

- In Service Configurator, click Start Service button in the Service Control window, or click Service → Start Service menu.
- In Control Panel, select Administrative Tools, then Services. Highlight and right-click Dynamsoft SourceAnywhere Standalone and click Start.

If the service failed to be started, you can refer to the SourceAnywhere server log file first, which may provide you with useful information for troubleshooting. The log can be accessed from Server Info → General Settings in Service Configurator.

If you still have difficulties in solving this issue, please refer to the following FAQ:
http://www.dynamsoft.com/Products/SAWStandalone_FAQ.aspx#T1



After the above configurations are done, you can install and run the client now. The following sections will demonstrate how to connect to server via the most commonly-used clients: Windows GUI client and Visual Studio IDE client.

- **Windows GUI Client**

Installation Process

Install SourceAnywhere Standalone GUI client for Windows. Running the installation wizard of SourceAnywhere Standalone GUI client for Windows will guide you through the installation.



Connect to Server

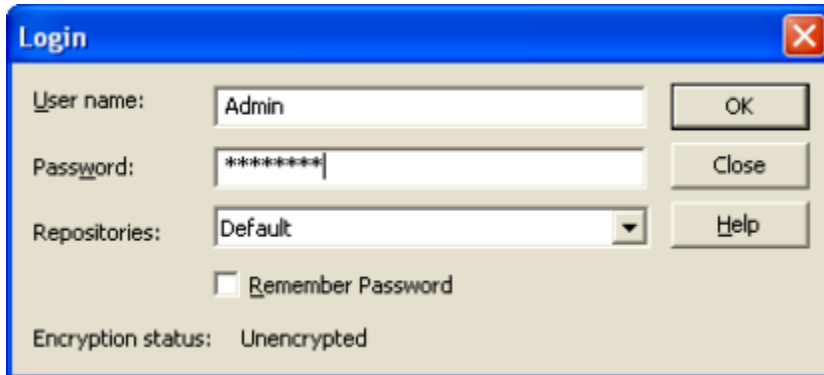
1. In Connect to Server dialog box, enter the IP and port of SourceAnywhere Standalone server.



If the "Error connecting to <IP> :< Port>" error occurs when connecting to server, please refer to the following FAQ for troubleshooting:

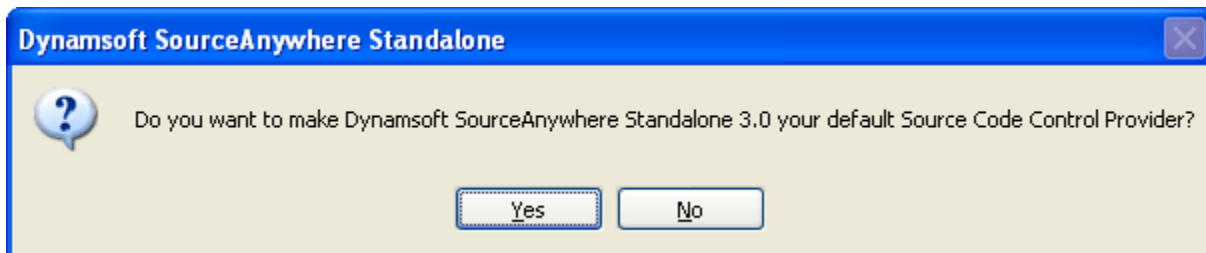
http://www.dynamsoft.com/Products/SAWStandalone_FAQ.aspx#T2

2. In Login dialog box, enter the username and password of the SourceAnywhere Standalone user, and then select the repository to login.



- **Visual Studio 6 and 2003 IDE Client**

Running the installation package of SourceAnywhere Standalone GUI Client for Windows will install the Visual Studio IDE integration. To enable SourceAnywhere Standalone IDE integration with Visual Studio 6 and Visual Studio 2003, click Yes button in response to the following question during the installation of SourceAnywhere Standalone Client:



Also, SourceAnywhere Standalone provides SCC Provider Manager that enables you to toggle between SourceAnywhere Standalone and other SCC providers as your current SCC provider when using Visual Studio 6 or 2003 IDE integration. SCC Provider Manager can be found under the program group of SourceAnywhere Standalone client.

After enabling SourceAnywhere Standalone as the current SCC provider, you'll be prompted with the Connect to Server and Login dialog boxes when you add projects to source control or open projects from source control.

- **Visual Studio 2005/2008/2010 IDE Client**

As mentioned in the above section, running SourceAnywhere Standalone Client installation package will install the Visual Studio IDE integration. To enable SourceAnywhere Standalone IDE integration with Visual Studio 2005/2008/2010, please go to Visual Studio Tools menu → Options → Source Control → Plug-in Selection → Current source control plug-in and then select "Dynamsoft SourceAnywhere Standalone".

After enabling SourceAnywhere Standalone as the current SCC provider, you'll be prompted with the Connect to Server and Login dialog boxes when you add projects to source control or open projects from source control.

- **Server Manager**

Server Manager is used to manage the 'SourceAnywhere' database which is automatically created on SQL Server during the installation of Dynamsoft SourceAnywhere Standalone Server.

Running the Setup

Simply run the installation executable and the setup wizard will guide you through all the steps.



Starting the Server Manager

Start Dynamsoft SourceAnywhere Standalone Server Manager using the entry created under the Start menu, and then the Connect to Server dialog box will prompt you for the server name and port number of the server that Server Manager is connecting to. This enables you to manage your Dynamsoft SourceAnywhere Standalone database both locally and remotely.

For more information about server manager, please refer to [Server Manager](#).