



# SCM **Anywhere**<sup>TM</sup>

Standalone

## Dynamsoft SCM Anywhere Standalone

Step by Step Setup Guide

**Dynamsoft**<sup>TM</sup>

The leading developer of version control and issue tracking software

## Table of Contents

Introduction .....	3
Prerequisite .....	3
Server Installation .....	3
Set the Admin Password .....	3
SQL Server Setup .....	4
Server Configuration.....	5
Set SQL Connection .....	5
Set Server IP and Ports .....	6
Start the Service .....	6
SCM Anywhere Standalone Clients .....	7
Windows GUI Client .....	7
Installation .....	7
Connect to Server .....	8
VSPackage .....	8
Register VSPackage .....	8
Use VSPackage in Visual Studio 2005/2008 .....	9
MSSCCI Plug-in .....	10
Use MSSCCI Plug-in in VS 6.0/2003 .....	11
Use MSSCCI Plug-in in VS 2005/2008 .....	11
Eclipse Plug-in .....	12
Java GUI Client .....	13

## 🔗 Introduction

This article is a quick step-by-step guide to be used as an aid for new users of SCM Anywhere Standalone. This article will guide you from installation and server configuration to enable you to log in the server successfully.

If you are having trouble getting SCM Anywhere Standalone to work properly and would like some assistance, please do not hesitate to contact us by:

Phone: 1-877-605-5491 (toll free) or 604-605-5491

Email: [scmsupport@dynamsoft.com](mailto:scmsupport@dynamsoft.com)

LiveHelp: <http://www.dynamsoft.com/support/livehelp.aspx>

For more detailed information on how to configure SCM Anywhere Standalone, we recommend you refer to the Help file that comes with the software.

## 🔗 Prerequisite

Before installing SCM Anywhere Standalone, please make sure your machine have .NET Framework 3.0 or above installed. And .NET Framework 3.0 with SP1 or above is recommended.

To download .NET Framework 3.0, please go to:

<http://www.microsoft.com/downloads/details.aspx?familyid=10cc340b-f857-4a14-83f5-25634c3bf043&displaylang=en>

To download .NET Framework 3.0 SP1, please go to:

<http://www.microsoft.com/downloads/details.aspx?FamilyID=EC2CA85D-B255-4425-9E65-1E88A0BDB72A&displaylang=en>

## 🔗 Server Installation

To perform the installation of SCM Anywhere Standalone Server, you must be logged in as a member of Administrator group and then make sure the SQL Server is running.

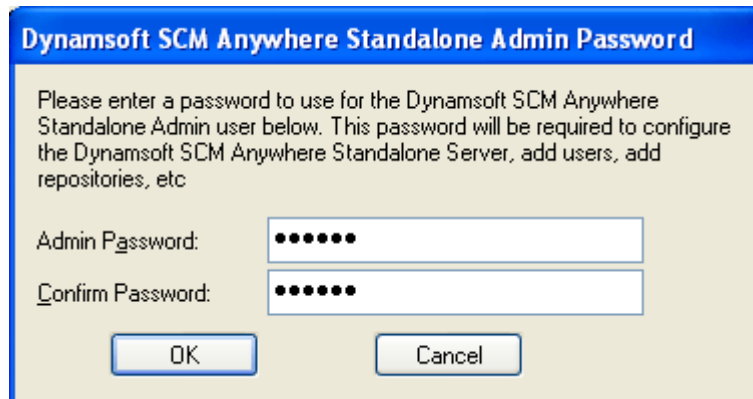
Double-clicking on the installation package will launch Dynamsoft SCM Anywhere Standalone Server Installation Wizard. During the installation, you can set the password of SCM Anywhere Standalone Admin and specify the SQL server to store the SCMAnywhere database.

### **Set the Admin Password**

You can create a password for user **Admin** - the default administrator of Dynamsoft

SCM Anywhere Standalone during the installation of SCM Anywhere Standalone Server. A blank password is acceptable, but not recommended because of security concerns.

This password will be required for the user **Admin** to log in Dynasoft SCM Anywhere Standalone server.



**Dynasoft SCM Anywhere Standalone Admin Password**

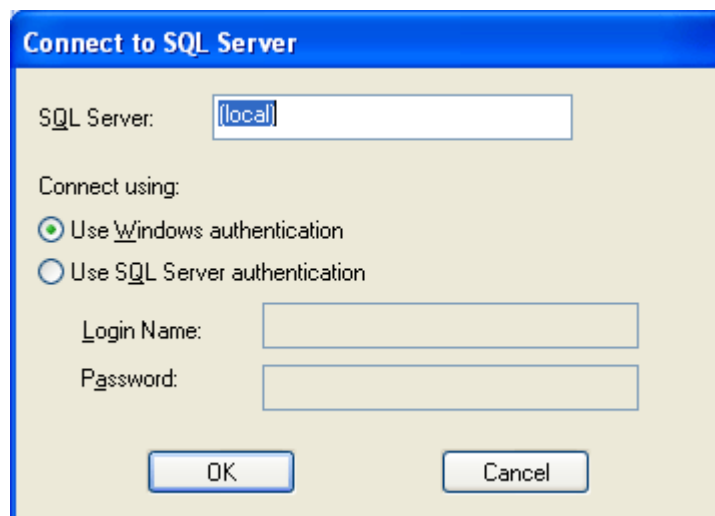
Please enter a password to use for the Dynasoft SCM Anywhere Standalone Admin user below. This password will be required to configure the Dynasoft SCM Anywhere Standalone Server, add users, add repositories, etc

Admin Password: [.....]

Confirm Password: [.....]

OK Cancel

## SQL Server Setup



**Connect to SQL Server**

SQL Server: [local]

Connect using:

Use Windows authentication

Use SQL Server authentication

Login Name: [.....]

Password: [.....]

OK Cancel

Dynasoft SCM Anywhere Standalone will create a database named as "SCMAny-where" on SQL Server installed on the local machine or a different machine on the network. You can choose to use Windows Authentication or SQL Server Authentication to connect to the SQL Server. If you are not sure which authentication mode your SQL Server is using, please contact your SQL Server administrator.

You can specify the SQL Server used to store Dynamsoft SCM Anywhere Standalone database during the SCM Anywhere Standalone Server installation process.

For SQL Server, you can specify the server IP or name in the SQL Server edit box.

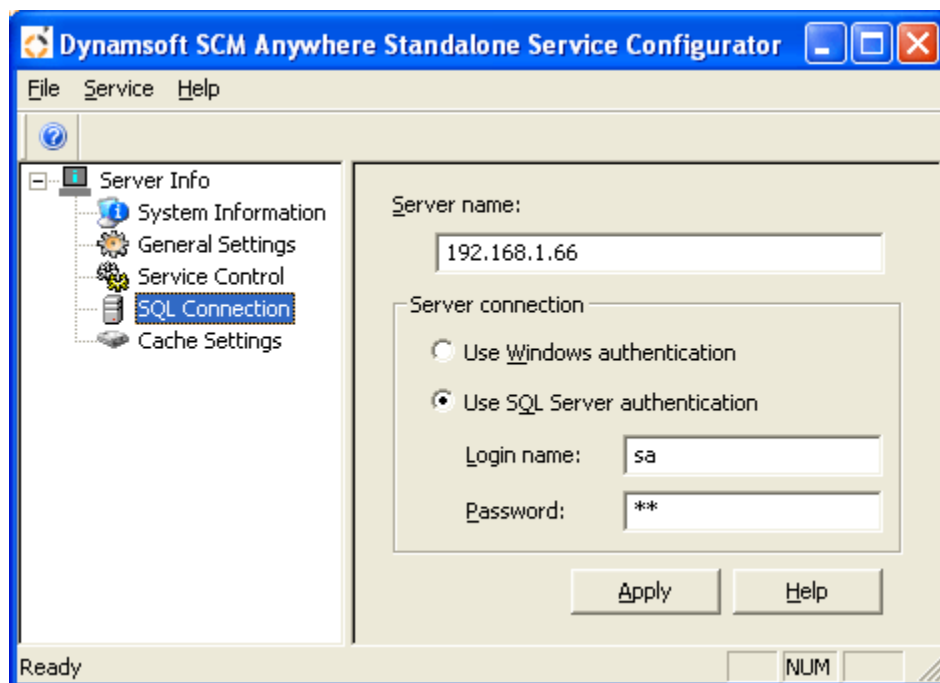
For SQL Server Express, you need to use the server name or IP address, plus "\", plus the SQL Server instance name. The default instance name is "SQLEXPRESS". So for SQL Server Express, you have "ServerName\SQLEXPRESS" for the Server name edit box.

If you choose SQL Server authentication mode, you should use the "sa" account or any other accounts that can play System Administrators roles in SQL Server.

## 🔄 Server Configuration

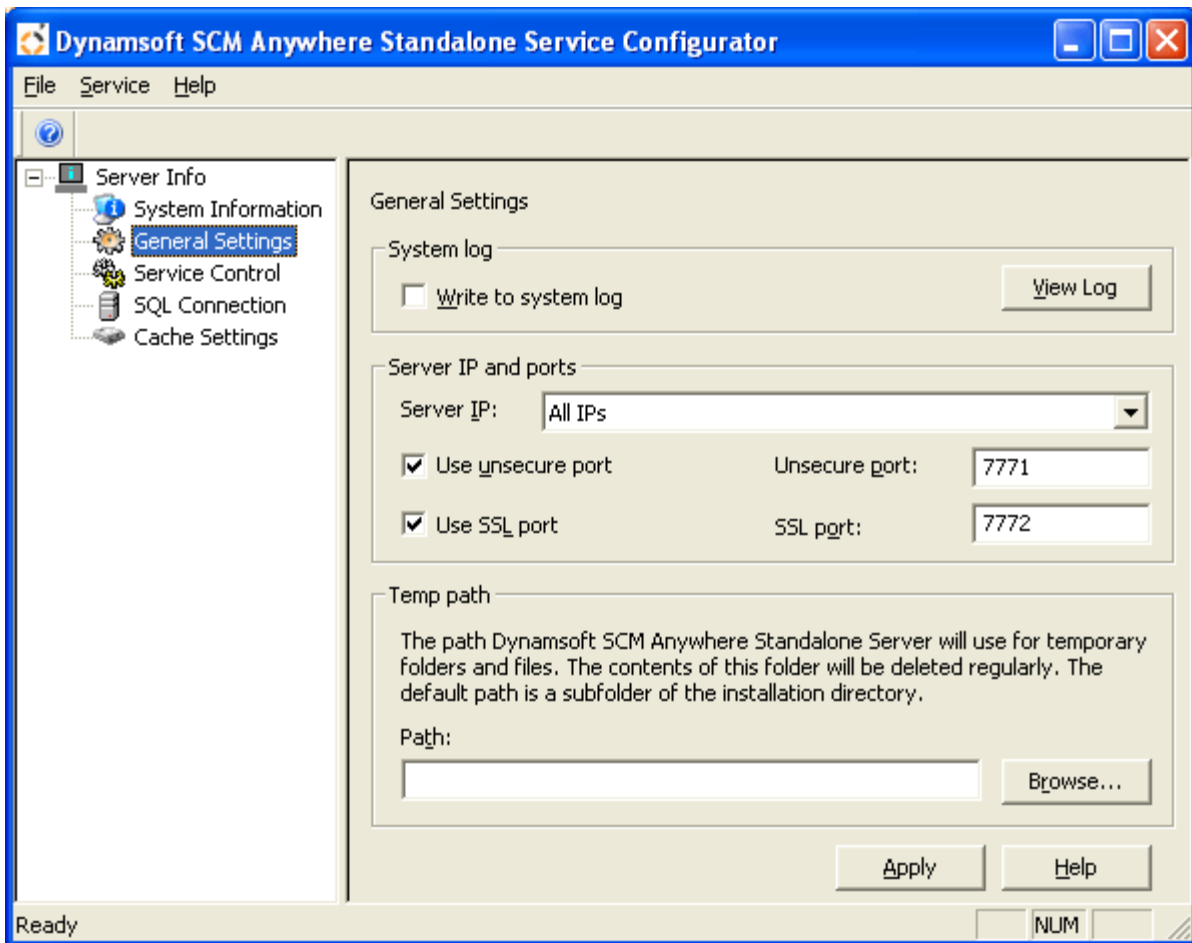
### Set SQL Connection

After the installation of SCM Anywhere Server, you can change the general properties of the SQL Server through SCM Anywhere Standalone Service Configurator Server Info->SQL Connection tab.



## Set Server IP and Ports

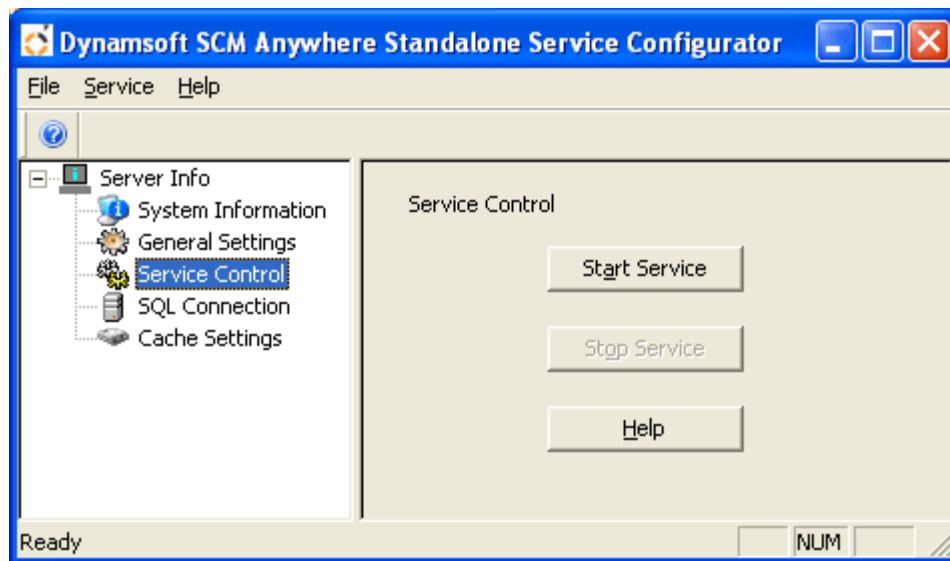
You can specify the Server IP and ports in Service Configurator->General Settings for SCM Anywhere Standalone Clients to connect. The default ports are 7771 and 7772.



## Start the Service

There are two ways to start the SCM Anywhere Standalone service:

- 1) In Service Configurator, click the **Start Service** button in the **Service Control** window, or click **Service** → **Start Service** menu.
- 2) In Control Panel, select **Administrative Tools**, then **Services**. Highlight and right-click Dynamsoft SCM Anywhere Standalone and click **Start**.



If the service failed to be started, you can refer to the SCM Anywhere server log file first, which may provide you with useful information for troubleshooting. The log can be accessed from Server Info → General Settings in Service Configurator.

If you still have difficulties in solving this issue, please refer to the following FAQ:  
[http://www.scmsoftwareconfigurationmanagement.com/Products/SCMStandalone\\_FAQ.aspx#T1](http://www.scmsoftwareconfigurationmanagement.com/Products/SCMStandalone_FAQ.aspx#T1)

## 🔄 SCM Anywhere Standalone Clients

SCM Anywhere Standalone provides multiple clients, including native Windows GUI client and JAVA GUI client, Windows and JAVA command line tool, Eclipse plug-in, Dreamweaver, Visual Studio 6, Visual Studio .NET 2003, Visual Studio 2005, Visual Studio 2008 and MSSCCI IDE integration, which can run in different environments.

The following sections will demonstrate how to connect to server via the most commonly-used clients: Windows GUI client, VSPackage, Eclipse Plug-in and MSSCCI Plug-in.

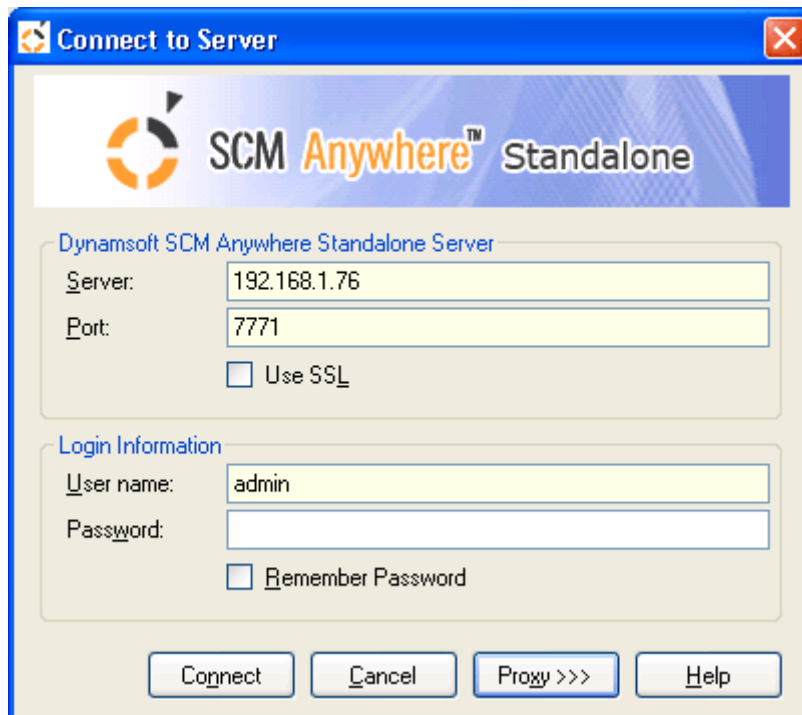
### Windows GUI Client

#### Installation

Double click the Dynamsoft SCM Anywhere Standalone Client.exe to run the SCM Anywhere Standalone Windows GUI Client. The installation wizard will guide you through the installation.

## Connect to Server

To connect to server through Windows Client, enter the IP address or domain name of the SCM Anywhere Standalone Server machine, the port of SCM Anywhere Standalone server, and the username and password of the SCM Anywhere Standalone user in the following Connect to Server dialog box:



The IP and port of the SCM Anywhere Standalone Server are specified in Service Configurator, see Set IP and Ports for more info.

If the “Error connecting to <IP>:<Port>” error occurs when connecting to server, please refer to the following FAQ for troubleshooting:  
[http://www.scmsoftwareconfigurationmanagement.com/Products/SCMStandalone\\_FAQ.aspx#T2](http://www.scmsoftwareconfigurationmanagement.com/Products/SCMStandalone_FAQ.aspx#T2)

## VSPackage

SCM Anywhere Standalone VSPackage can fully integrate with Visual Studio 2005/2008.

### Register VSPackage

If you have Visual Studio 2005 or 2008 installed on your computer, running the installation package of SCM Anywhere Standalone Windows GUI Client will register VSPackage.



If not, you will get the following message box during the SCM Anywhere Standalone Windows Client installation.

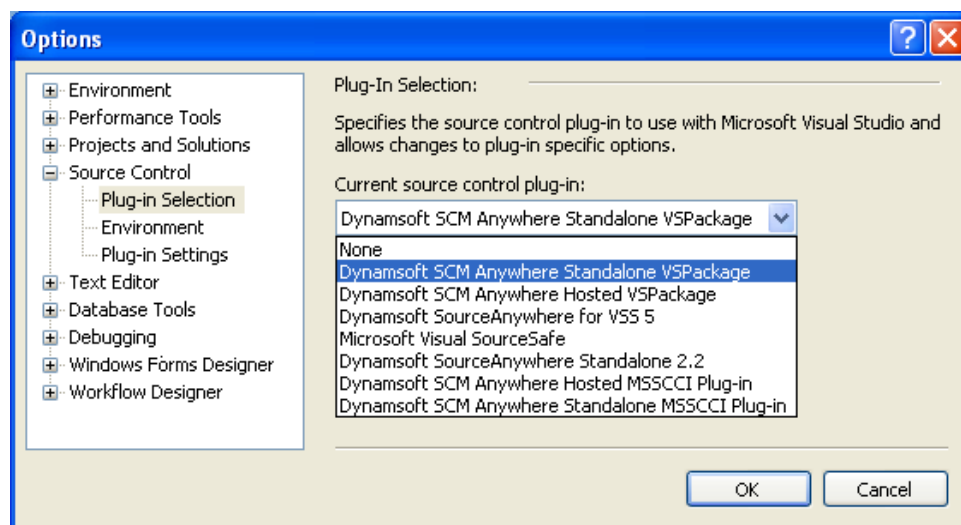


After you install Visual Studio 2005/2008, you can register the VSPackage using SCM Anywhere Standalone VSPackage Register, which can be found in the program group of SCM Anywhere Standalone Client:

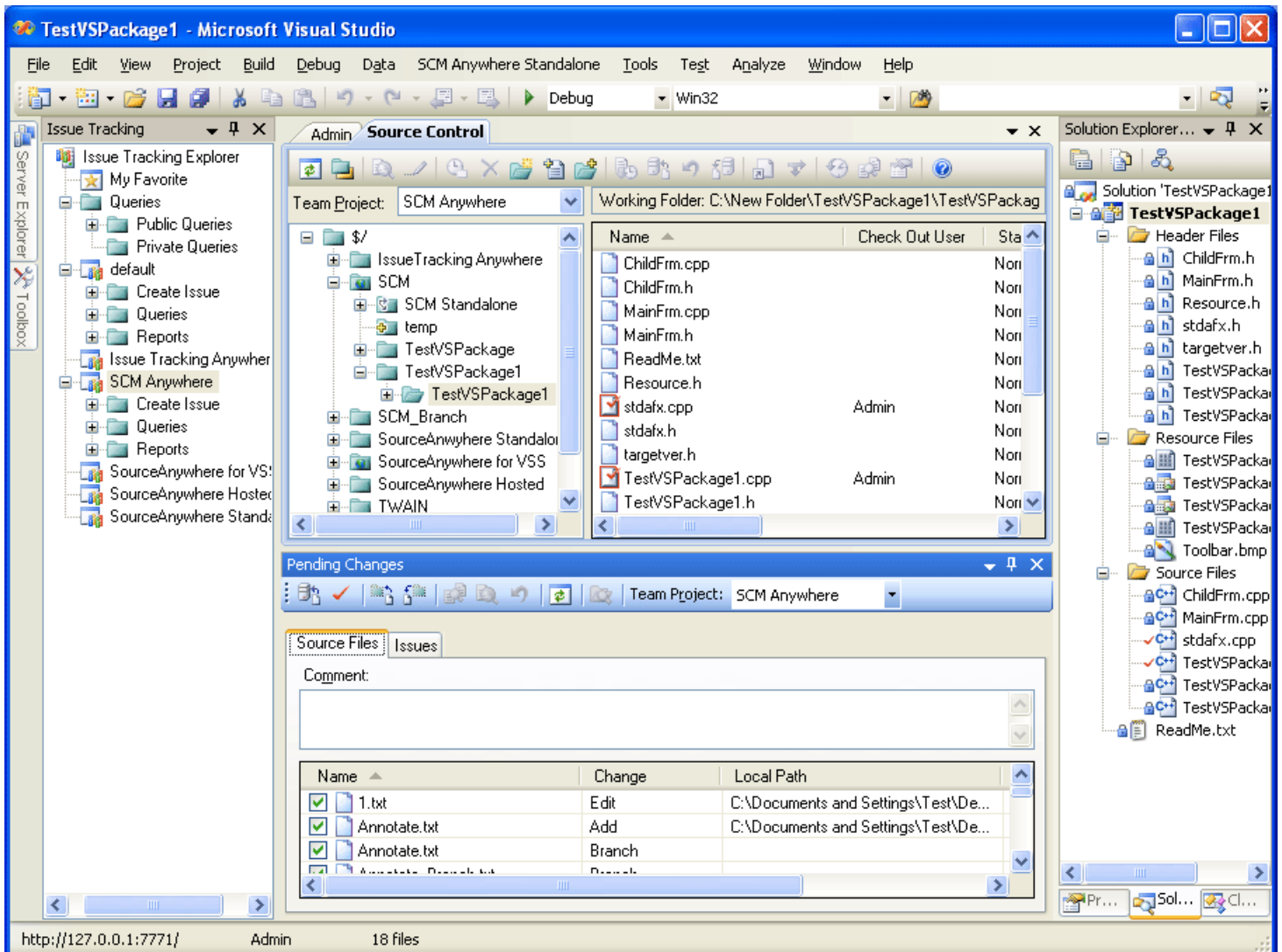


## Use VSPackage in Visual Studio 2005/2008

To use SCM Anywhere Standalone VSPackage with Visual Studio 2005/2008, please go to Visual Studio **Tools** menu → **Options** → **Source Control** → **Plug-in Selection** → **Current source control plug-in** and then select "Dynamsoft SCM Anywhere Standalone VSPackage".

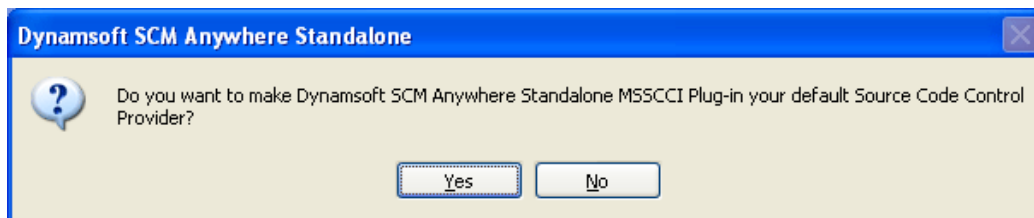


After enabling SCM Anywhere Standalone VSPackage as the current SCC provider, you will be able to add projects to source control of SCM Anywhere Standalone VSPackage.



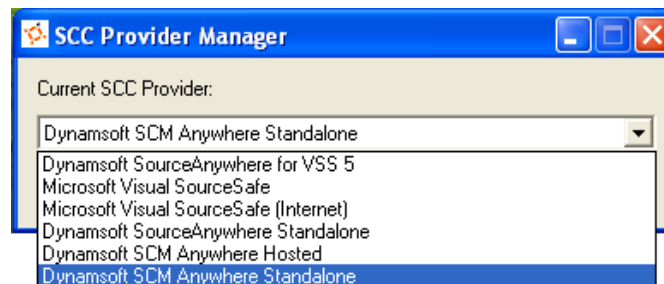
## MSSCCI Plug-in

SCM Anywhere Standalone MSSCCI Plug-in can be integrated with any IDE that supports MSSCCI. Running the installation package of SCM Anywhere Standalone GUI Client for Windows will install the MSSCCI Plug-in. To enable SCM Anywhere Standalone to integrate with Visual Studio 6, Visual Studio 2003 or other MSSCCI compatible IDEs, click **Yes** button in response to the following question during the installation of SCM Anywhere Standalone Client:



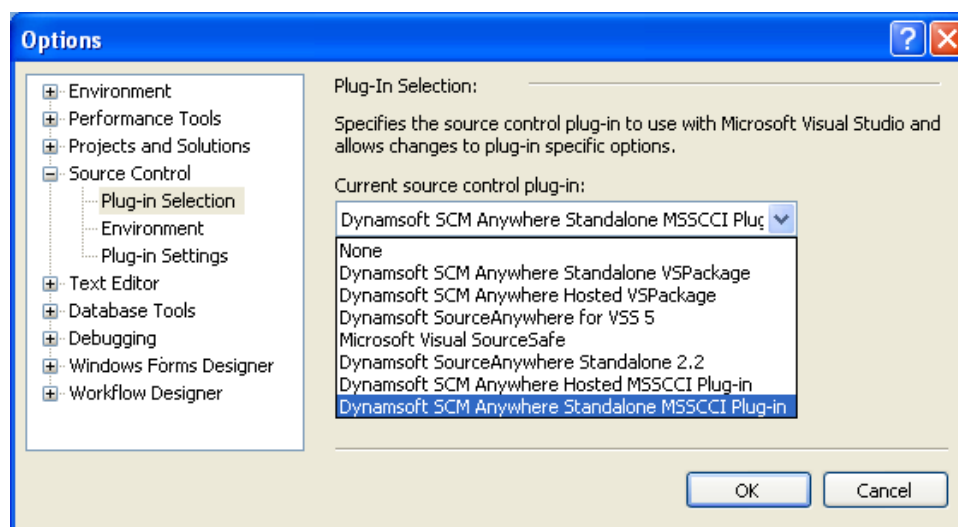
## Use MSSCCI plug-in in Visual Studio 6.0/2003

SCM Anywhere Standalone provides SCC Provider Manager that enables you to toggle between SCM Anywhere Standalone and other SCC providers as your current SCC provider when using Visual Studio 6, Visual Studio 2003 or other MSSCCI compatible IDEs integration. SCC Provider Manager can be found in the program group of SCM Anywhere Standalone client.



## Use MSSCCI plug-in in Visual Studio 2005/2008

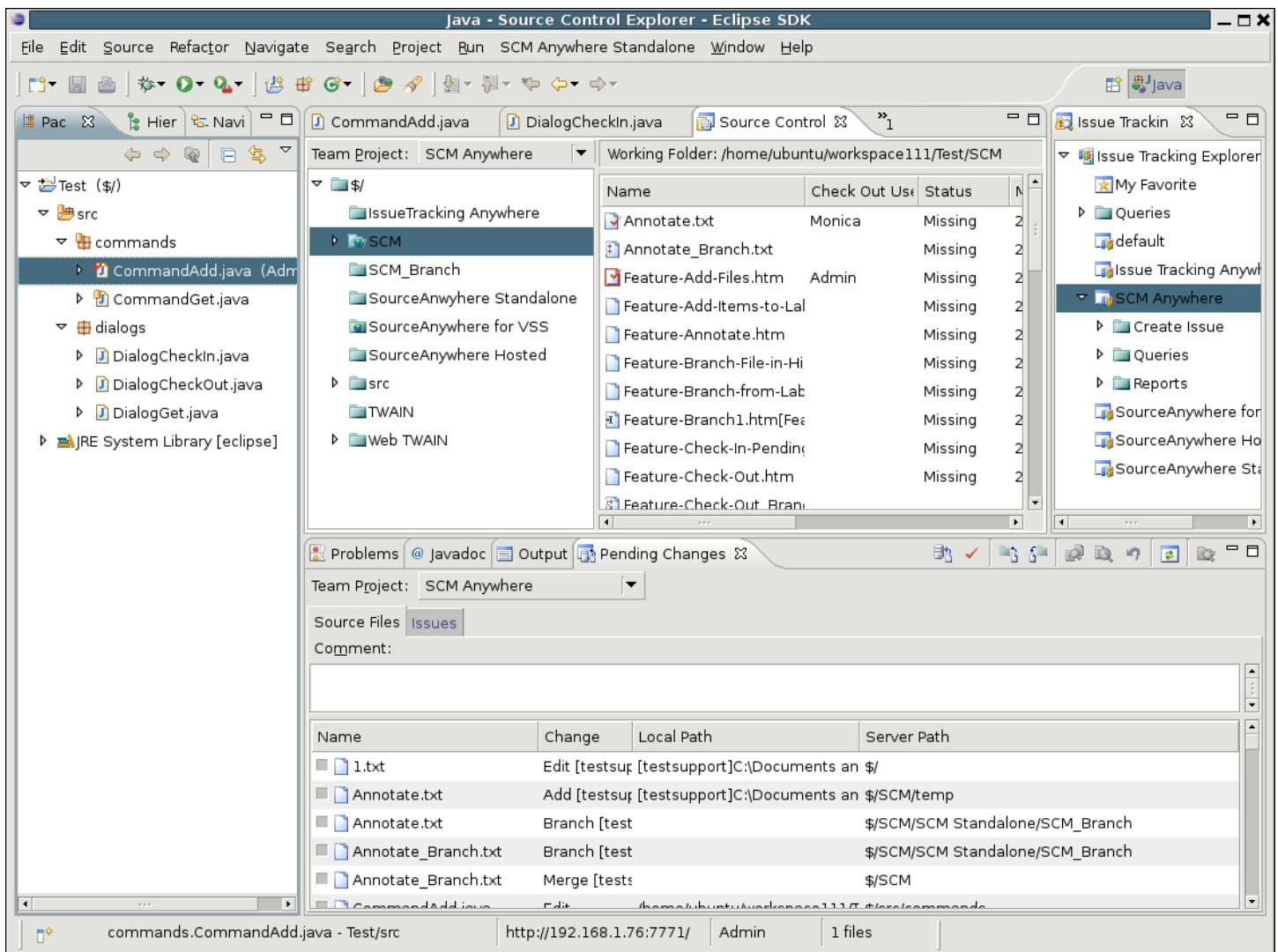
To integrate SCM Anywhere Standalone with Visual Studio 2005/2008, please go to Visual Studio **Tools** menu → **Options** → **Source Control** → **Plug-in Selection** → **Current source control plug-in** and then select "**Dynamsoft SCM Anywhere Standalone MSSCCI Plug-in**".



After enabling SCM Anywhere Standalone as the current SCC provider, you'll be prompted with the **Connect to Server** dialog box when you add projects to source control or open projects from source control.

## Eclipse Plug-in

SCM Anywhere Standalone Eclipse Plug-in fully integrates with Eclipse. With the Eclipse Plug-in, you can do source control, issue tracking and management in Eclipse as in SCM Anywhere Standalone Client.



For information on how to install Eclipse Plug-in, please refer to:  
<http://www.dynamsoft.com/help/SCM%20Standalone/Eclipse-Plugin/How-to-Install-the-Plugin.htm>

## Java GUI Client

Besides the native Windows Client, SCM Anywhere Standalone provides a Java client which enables you to access the SCM Anywhere Standalone server from any platforms that SWT (Standard Widget Toolkit) supports, such as Linux, MAC, Solaris, etc.

To download SCM Anywhere Standalone Java Client, please visit:

[http://www.dynamsoft.com/Downloads/SCMStandalone\\_Download.aspx](http://www.dynamsoft.com/Downloads/SCMStandalone_Download.aspx)

For information on how to run SCM Anywhere Standalone Java Client, please refer to:

<http://www.dynamsoft.com/help/SCM%20Standalone/Java-GUI-Client/How-to-Run-Java-Client.htm>

