

SourceAnywhere™
for VSS

Dynamsoft SourceAnywhere for VSS

Step by Step Setup Guide

Dynamsoft™

The leading developer of version control and issue tracking software

Contents

- Introduction..... 3
- The Guide 3
 - Server..... 3
 - 1. Installation Process..... 3
 - 2. Specify the IP address and port of the server..... 4
 - 3. Add/Manage VSS databases 5
 - 4. Add/Manage SourceAnywhere for VSS Users..... 6
 - 5. Start/Stop SourceAnywhere for VSS Server service 7
 - Windows GUI Client 8
 - 1. Installation Process..... 8
 - 2. Connect to Server..... 9
 - Visual Studio 6 and 2003 IDE Client..... 10
 - Visual Studio 2005/2008 IDE Client..... 11

Introduction

This article is a quick step-by-step guide for new users of SourceAnywhere for VSS. This article will guide you from installation and configuring settings to being able to log into the server successfully.

If you are having trouble getting SourceAnywhere for VSS to work properly and would like some assistance, please do not hesitate to contact us by:

Phone: 1-877-605-5491 (toll free) or 604-605-5491

Email: sawvss@dynamsoft.com

LiveHelp: www.dynamsoft.com/support/livehelp.aspx

For more detailed information on how to configure SourceAnywhere for VSS, we recommend you refer to the help document that comes with the software.

The Guide

Server

1. Installation Process

- **Install Visual SourceSafe Client.**

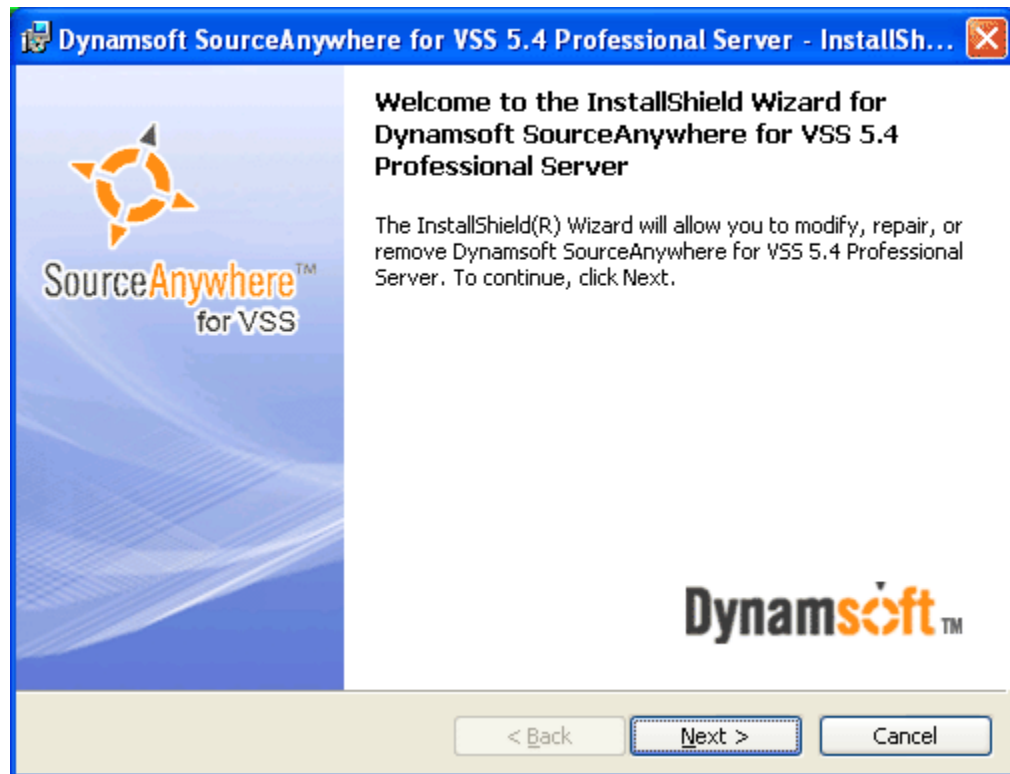
You need the VSS Automation component (APIs) to use SourceAnywhere for VSS Server. Installing the VSS Client also installs the VSS APIs.

Note: VSS 6.0d (build 31222) or above is recommended as the backend of SourceAnywhere for VSS.

- **Install SourceAnywhere for VSS Server.**

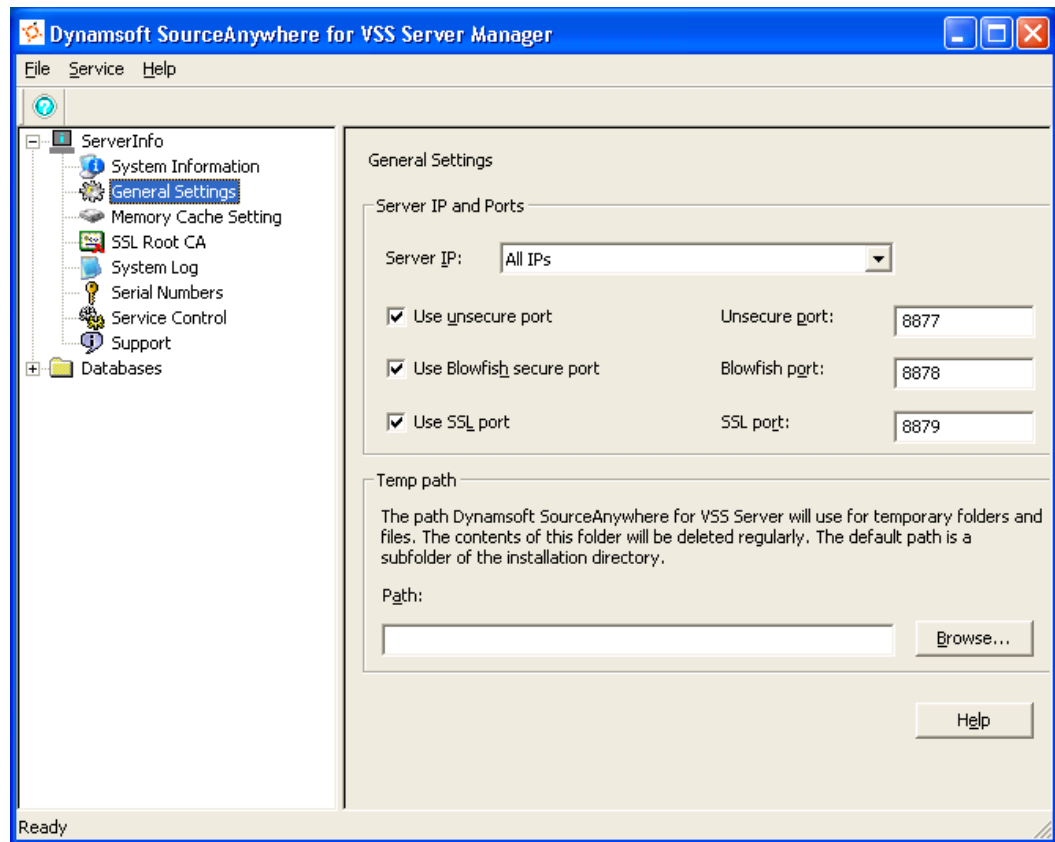
Download link: http://www.dynamsoft.com/Downloads/SAW_TryIt.aspx

Running the setup is pretty straightforward and the setup wizard will guide you through all the steps.



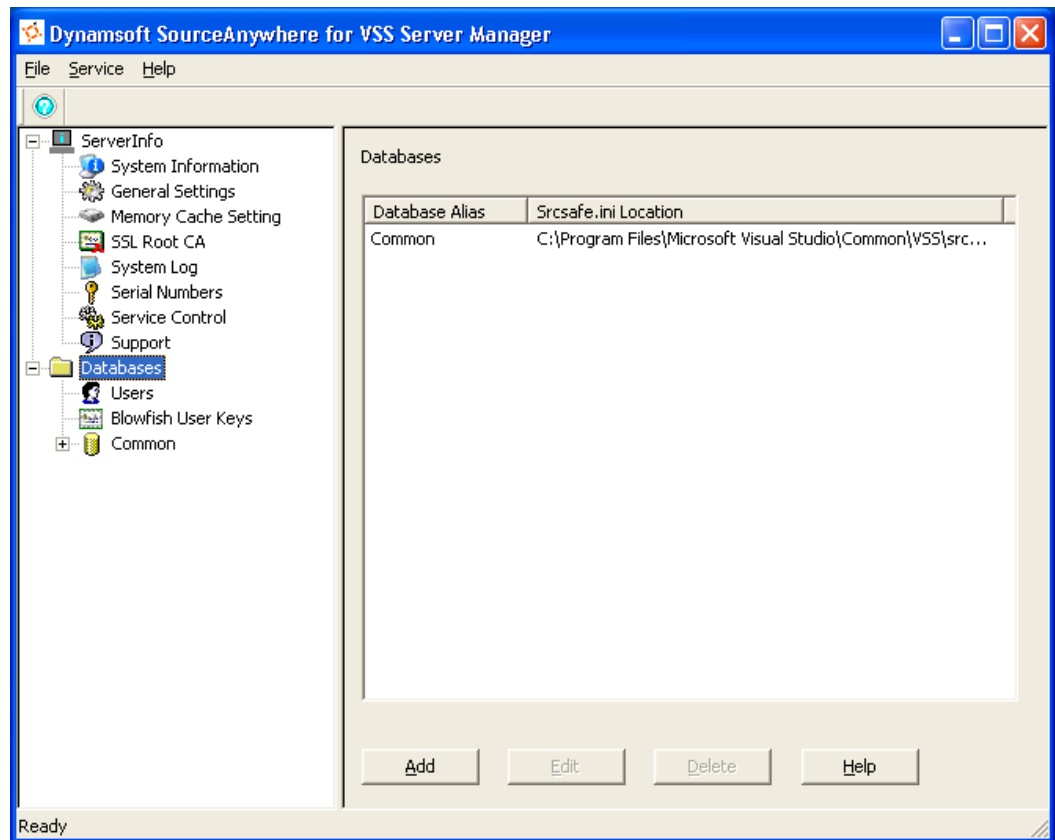
2. Specify the IP address and port of the server

Log into SourceAnywhere for VSS Server as admin. The password of admin is the same as the one you specified in VSS. Go to "ServerInfo -> General Settings" to set or change the server IP and port.



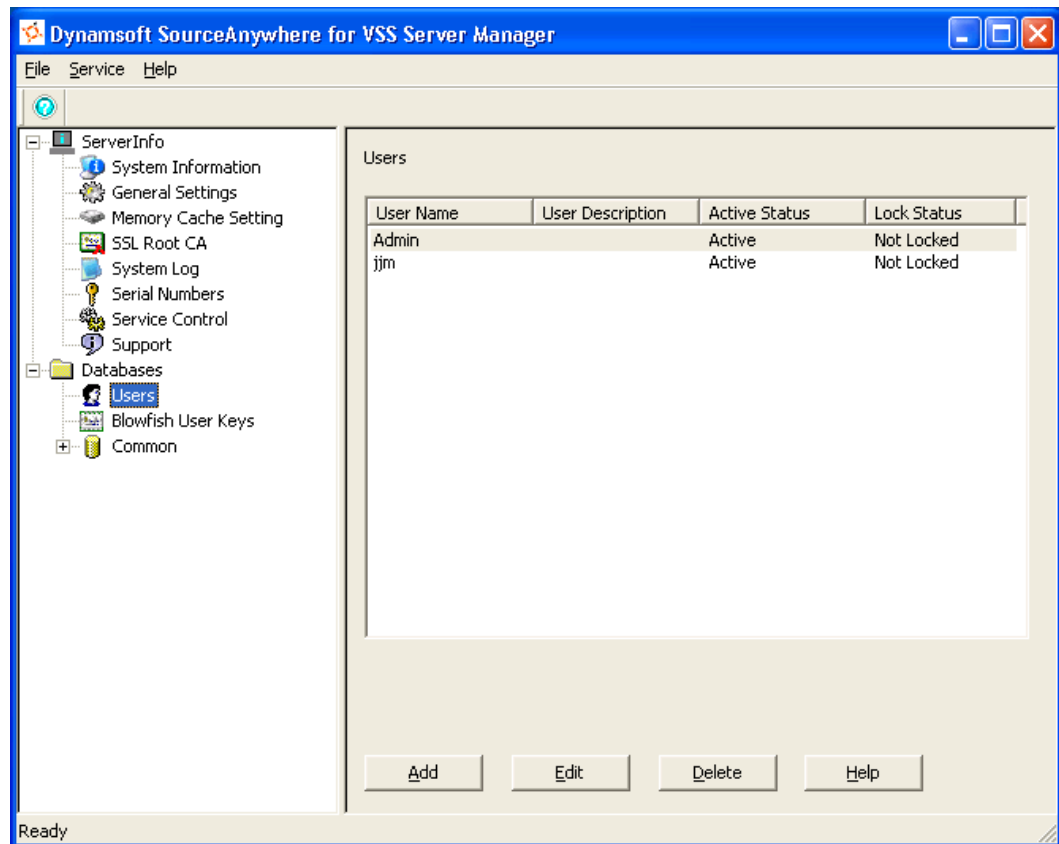
3. Add/Manage VSS databases

Go to "SourceAnywhere for VSS Server -> Databases" to add and manage your VSS databases.



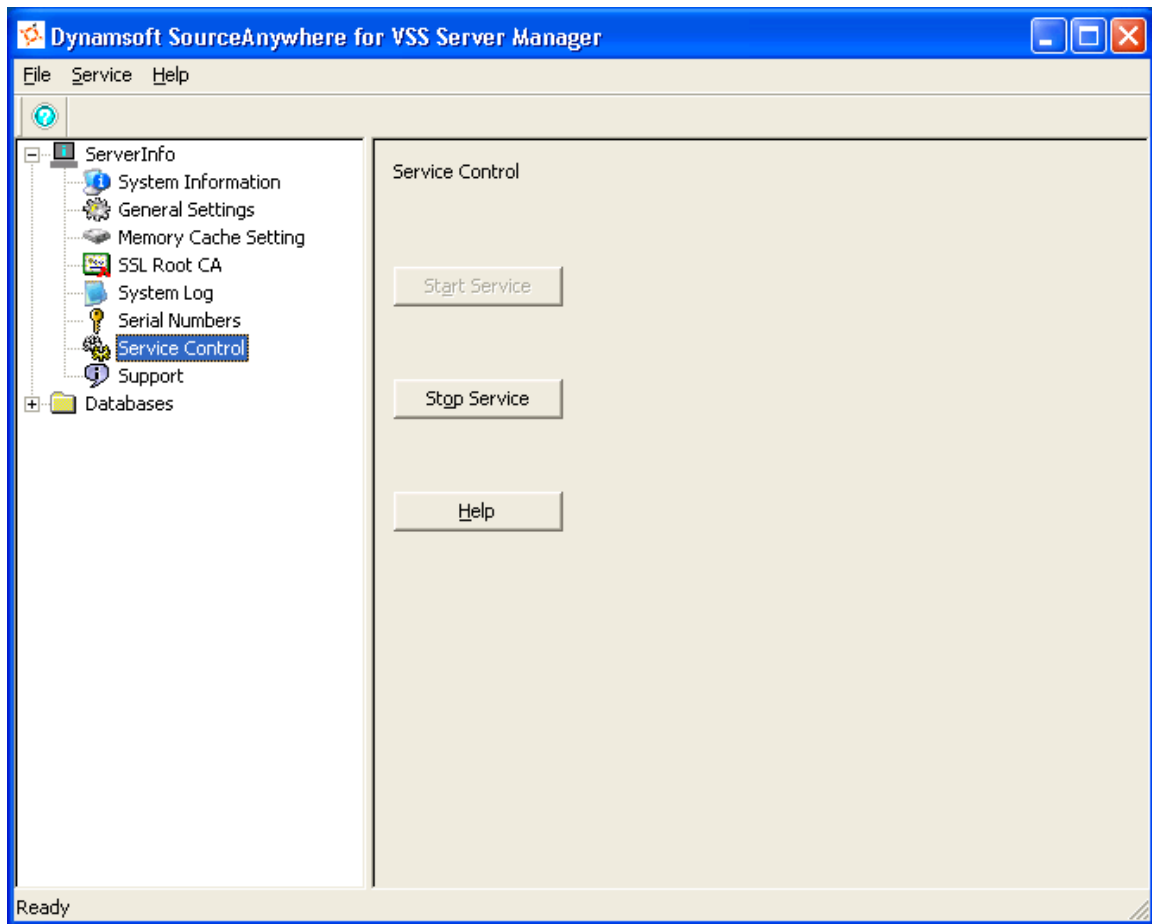
4. Add/Manage SourceAnywhere for VSS Users

Go to "SourceAnywhere for VSS Server -> Users" to add and manage users. The users should already exist in VSS. You can specify which VSS users are allowed to access your VSS databases from SourceAnywhere for VSS here. This does not add or remove users in VSS.



5. Start/Stop SourceAnywhere for VSS Server service

Go to SourceAnywhere for VSS Server -> ServerInfo -> Service Control



Click [here](#) for troubleshooting information if you find that the Start Service and Stop Service buttons are grayed out.

Click [here](#) for troubleshooting information if your SourceAnywhere for VSS service cannot be started.

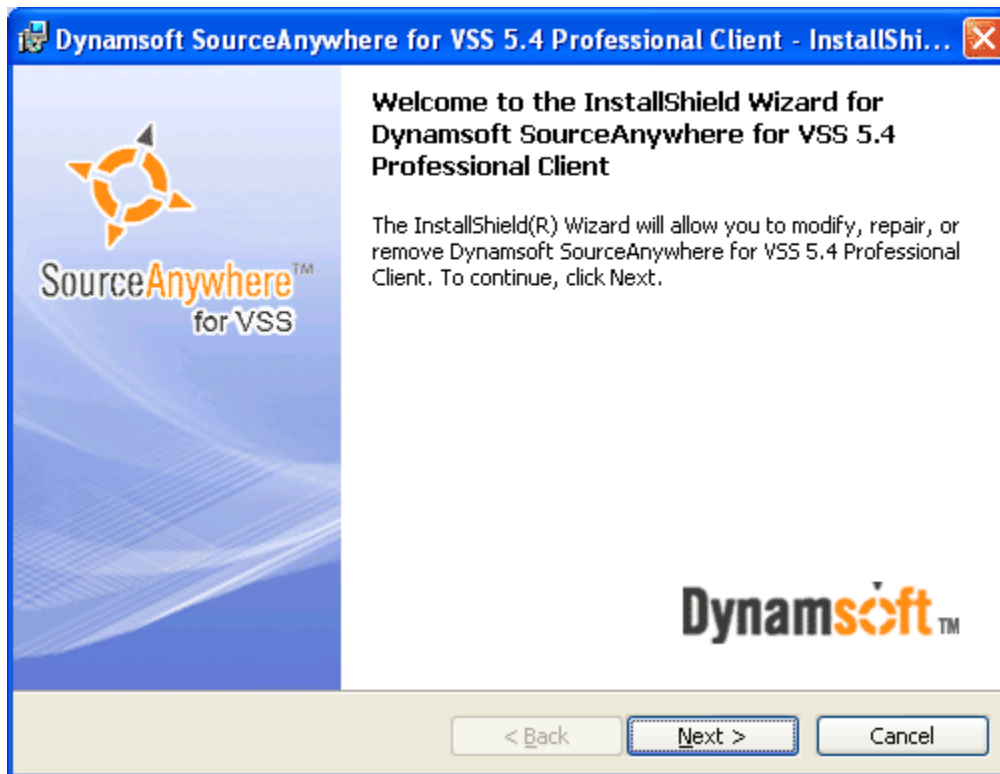
After the above configurations are done, you can install and run the clients now. The following sections will demonstrate how to connect to the most commonly used clients: Windows GUI client and Visual Studio IDE client.

Windows GUI Client

1. Installation Process

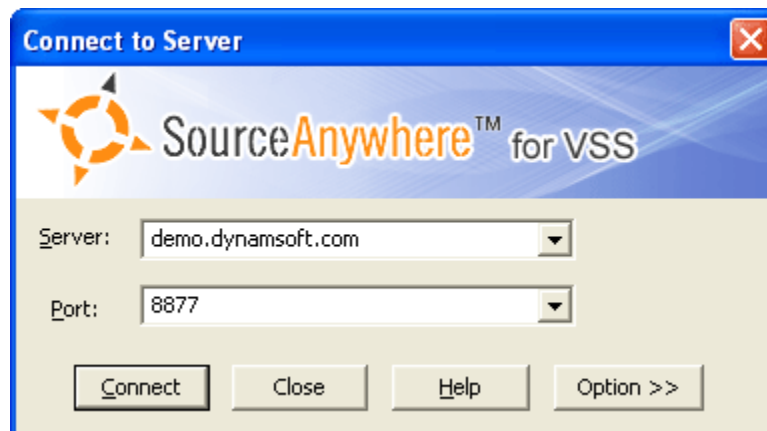
Download link: http://www.dynamsoft.com/Downloads/SAW_TryIt.aspx

Running the setup is pretty straightforward. Simply run the installation executable and the setup wizard will guide you through all the steps.



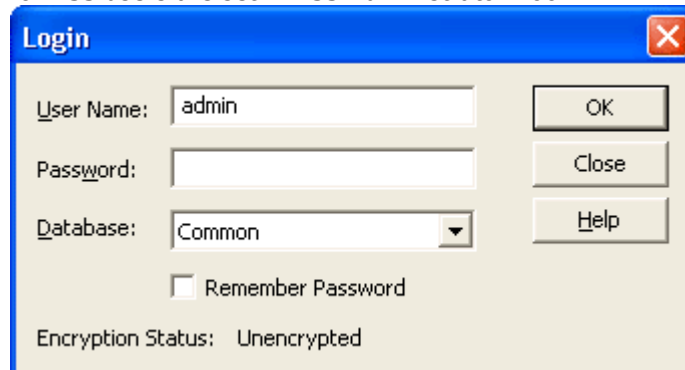
2. Connect to Server.

- Start SourceAnywhere for VSS Client using the entry created under the Start menu. In the **Connect to Server** dialog box, enter the IP and port, which are configured in SourceAnywhere for VSS Server -> General Settings.



- In Login dialog box, enter the username and password of a SourceAnywhere for VSS user, and then select the VSS database to login.

Please make sure the user is an existing SourceSafe user and is activated in SourceAnywhere for VSS Server Manager. The default passwords of the SourceAnywhere for VSS users are set in VSS Administrator Tool.



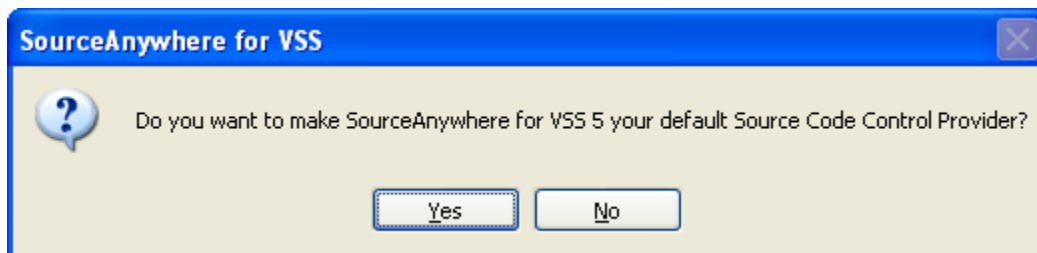
If you get error message "**Error connecting to <IP> : <Port>**", please click [here](#).

If you get error message "**Error opening database<path to srcsafe.ini>**" or "**The SourceSafe database <path to srcsafe.ini> does not exist. Please select another database.**", please click [here](#).

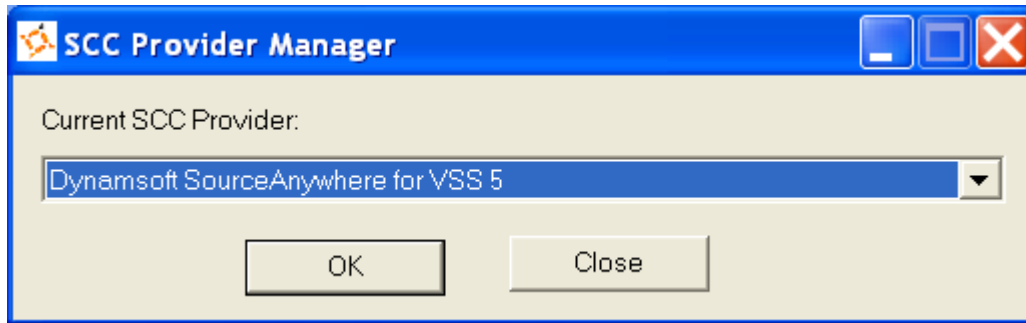
For error message "**The client is not compatible with the server**", please click [here](#).

Visual Studio 6 and 2003 IDE Client

Running the installation package of SourceAnywhere for VSS GUI Client for Windows will also install the Visual Studio IDE integration. To enable SourceAnywhere for VSS IDE integration with Visual Studio 6 and Visual Studio 2003, click Yes in response to the following dialog box during the installation of SourceAnywhere for VSS Client:



Also, SourceAnywhere for VSS provides SCC Provider Manager that enables you to toggle between SourceAnywhere for VSS and other SCC providers as your current SCC provider when using Visual Studio 6 or 2003 IDE integration. SCC Provider Manager can be found under the program group of SourceAnywhere for VSS Client.



After setting SourceAnywhere for VSS as the current SCC provider, you'll be prompted with the Login dialog box when you add projects to source control or open projects from source control.

Visual Studio 2005/2008 IDE Client

As mentioned in the above section, running SourceAnywhere for VSS Client installation package will install the Visual Studio IDE integration. To enable SourceAnywhere for VSS IDE integration with Visual Studio 2005/2008, please go to "Visual Studio Tools menu | Options | Source Control | Plug-in Selection | Current source control plug-in" and then select "Dynamsoft SourceAnywhere for VSS".

